

aqua 40.00 Liquid Sampler

Extension module for Karl Fischer titrator

Product description

For high sample volumes, the use of an automatic sampler is worthwhile. The Liquid Sampler is an extension module for the Karl Fischer titrator AQUA 40.00 from ECH. It is suitable for automated analyses according to ASTM E 1054.

The samples are automatically dosed directly into the measuring cell of the titrator. In the process, the needle pierces the septum of the lateral sample dosing port on the measuring cell. This keeps the system tight and free from ambient moisture.

Applications

The system can be used for all types of liquid samples, including aggressive media and solvents, but not for highly viscous substances.

- Organic liquids
- Solvents
- Hydrocarbons
- Alcohols like methanol, ethanol, propanol, isopropanol
- Extracts
- Phenols
- Ether
- DMF, DMSO
- Acetonitrile



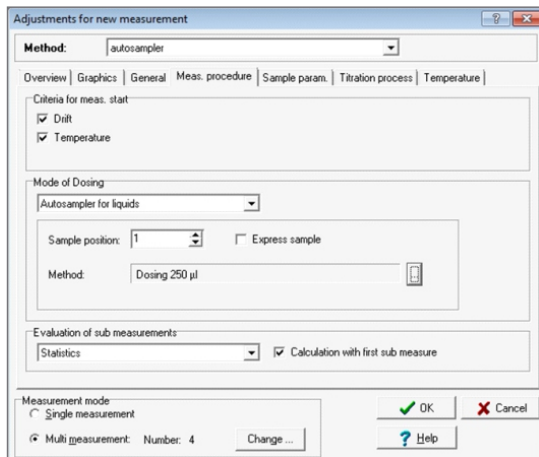
The Liquid Sampler is an extension module for the AQUA 40.00

Sample supply

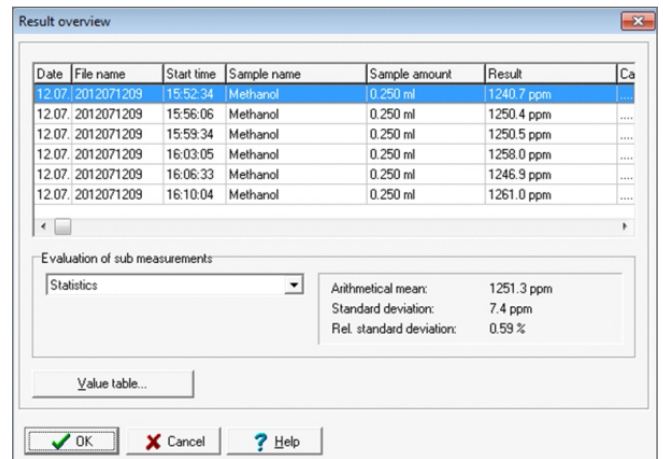
The sample tray with 36 positions is suitable for various vessels up to 30 mL, which are closed with septum caps. The sample volume that is dispensed depends on the dispensing syringe used. Volumes from 1 to 10 mL are possible. Multiple measurements of the same sample can be performed.

Features

- Sample tray for 36 samples
- Components made of inert and resistant materials
- Rinsing position: By means of a piston dosing device, the rinsing liquid is conveyed into an overflow vessel and flows off by gravity (material PTFE)
- Sample loop: PTFE hose helix, volume adapted to syringe volume, prevents sample contact in the piston dosing unit
- Up to 25 methods editable - easy programming of any rinsing and dosing steps



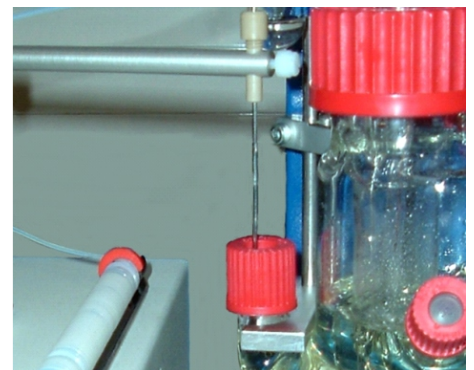
Settings for new measurement - here 4 x measurement of the same sample



Result overview with statistical evaluation

Technical specifications

Sample supply:	Sample tray 36 x 30 mL in 3 lanes (glass sample tubes with septum screw cap)
Interface:	Standard interface RS 232
Piston dosing unit:	Model: Cavro XLP 6000 with 3-port-valve; double loop valve
Syringes:	1 mL, 2.5 mL, 5 mL, 10 mL
Resolution:	0.01 mL
Dosing volume sample:	0.01 mL to 10 mL, can be increased by multiple dosing
Power supply:	115 or 230 V, 50 ... 60 Hz
Power input:	80 W
Dimensions:	30 x 50 x 30 cm (W x D x H)
Weight:	4 kg



Sample dosing directly into the measuring cell of the titrator

ECH Elektrochemie Halle GmbH

Otto-Eißfeldt-Str. 8
D-06120 Halle (Saale)
Germany

Tel.: +49 (0) 345 279570-0
Fax: +49 (0) 345 279570-99

Email: info@echscientific.com • www.ech.de • www.aquamaxkf.com

ECH Scientific Limited

Building 69, Wrest Park, Silsoe
Bedfordshire, MK45 4HS
United Kingdom

Tel.: +44 (0) 1525 404747
Fax: +44 (0) 1525 404848



the ECH advantage

in-lab | mobile | on-line | process